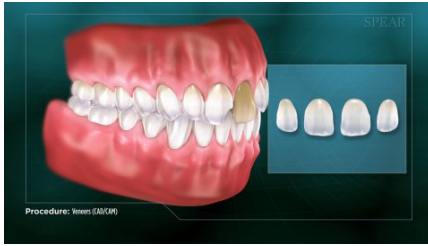


RESTORATIVE PROCEDURES  
Veneers (CAD/CAM)



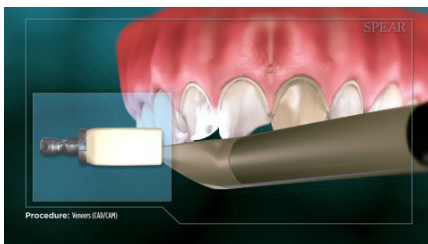
Veneers cover the front surface of a tooth, and are typically done to improve the appearance of a patient's smile. Veneers usually require multiple appointments to complete.



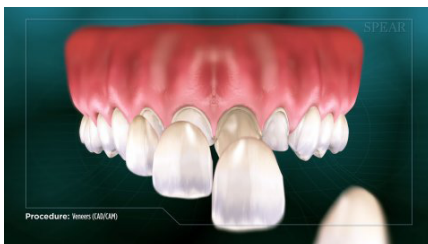
With CAD/CAM technology, a computer helps to design the veneers.



Your teeth are prepared to make room to place the veneers.



Next, the prepared teeth are scanned, and the veneers are created right in your doctor's office while you wait.



When the veneers are ready, your doctor will make final adjustments and bond them into place.



Your teeth are restored to optimal shape and function, and your smile will be greatly improved.

